

HELLENIC REPUBLIC

**National and Kapodistrian
University of Athens**

EST. 1837

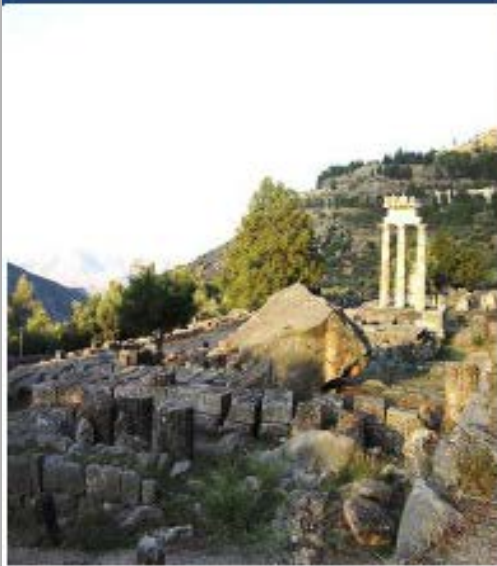
Enhancing Resilience of Cultural Heritage Sites in Greece: lessons learnt from initiatives undertaken by the Ministry of Culture of the Hellenic Republic

**Prof. Constantinos Cartalis, Chairman of the working group on Climate
Change and Cultural Heritage of the Ministry of Culture; Member of the
Coordination Unit**

Initiative #1. Define vulnerability for archaeological sites and monuments to climate change – Develop adaptation plans



Initiative #2. Promote proactive technical works for 5 archaeological sites



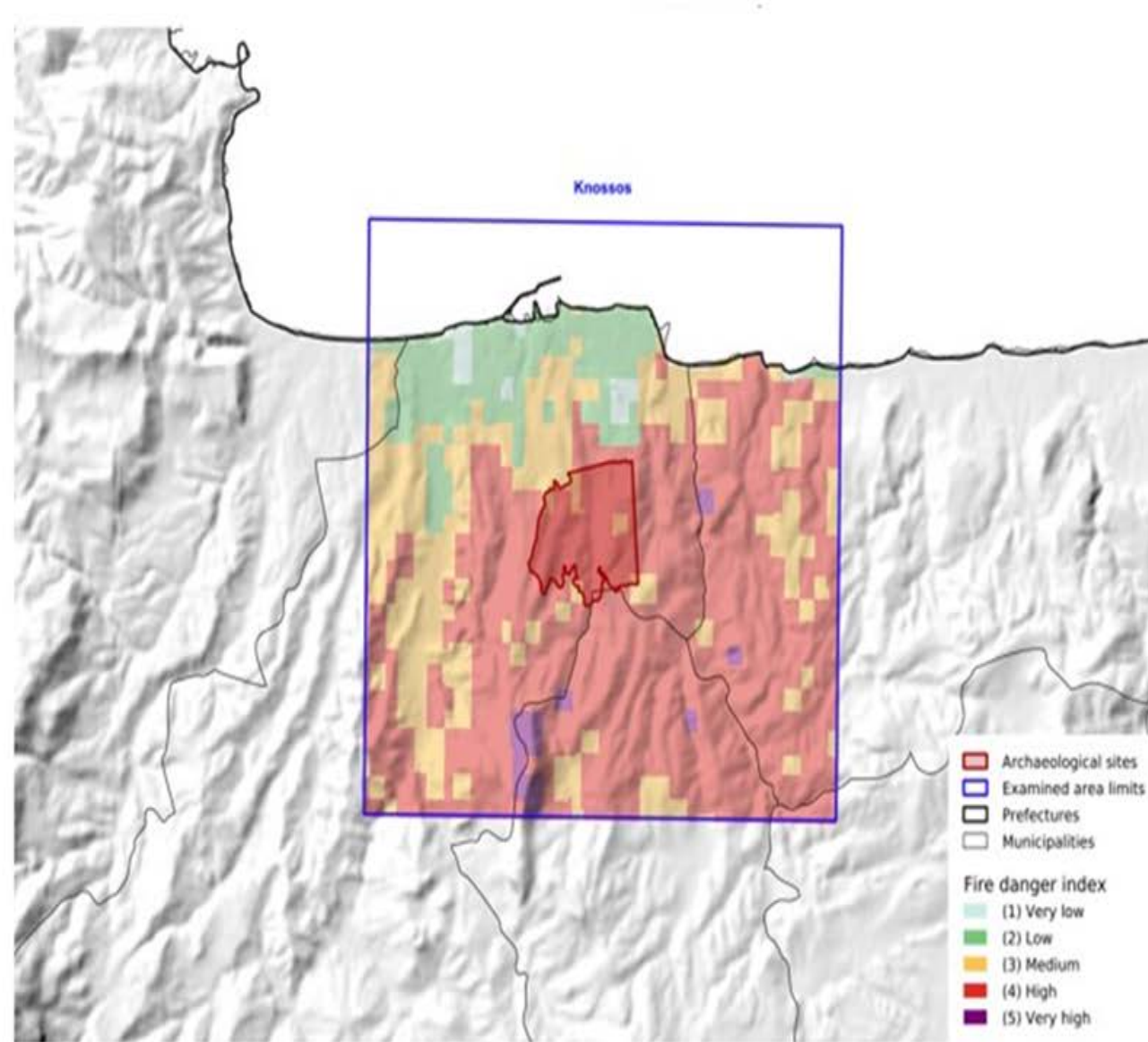
**Countermeasures against
rock falls in Delphi**

Flood protection works at Dion



Initiative #3: Enhance the resilience dimension for the management plans of UNESCO sites for present and future climate risks (forest fires and floods)

Knossos



Initiative #4: Cooperation with the Ministry of Climate Crisis and Civil Protection for the implementation of proactive measures for over 30 archaeological sites that demonstrate high climate risk for forest fires

- Improvement of the passive and active fire prevention systems within the archaeological area.
- Back-up systems for power supply.
- Instalment of watering systems in the vicinity of the archaeological sites.
- Fire propagation modelling/sensors in the visible and thermal infrared
- Fire drills
- Evacuation plans for visitors and workers.

- **LESSONS LEARNT**

- There is a need to refine the criteria for ecosystems in order to also refer to the concentration, continuity and integrity of the cultural heritage.
- The strong variation in climate vulnerability by location requires a site-based analysis.

An adaptation plan cannot be applied indiscreetly at all sites

- Monitor how climate change and the socio-economic changes may impact the communities which support the conservation of cultural heritage.
- Exhaust all efforts to promote **adaptation on site** to respect the immoveable concept and **avoid the loss of cultural memory**.
- Communicate **local knowledge** in adaptation.
- Take note that **adaptation is not limitless**.